



isee NETSIM™

Web-based Simulation Sharing

isee NetSim is the next generation in web-based model sharing. With isee NetSim, you'll quickly and easily publish STELLA and *iThink* models to the web making them accessible to anyone with a browser.

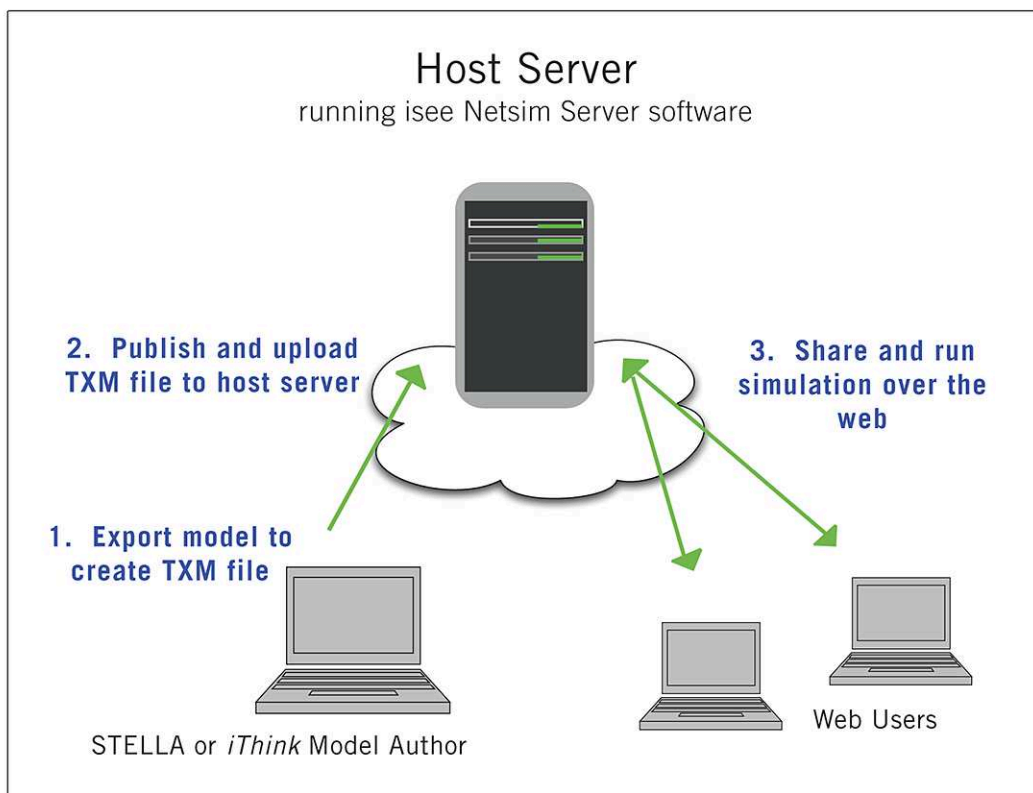
Your students, colleagues, and clients can run simulations and understand models through the storytelling sequence you create in STELLA or *iThink*.

"isee Netsim dramatically expands our ability to share models and communicate with the world how complex dynamic things work."

— Mark Heffernan
Evans & Peck

How it works

Publishing a model to the web with isee NetSim is a simple 3-step process.



The isee NetSim wizard guides you through the process of clicking on a model file that has been exported from *iThink* or STELLA, selecting a host server location and then publishing the simulation to that site. Models can be published to a free hosting service provided by isee's partner, Forio Business Simulations, or to any other server running the isee NetSim Server software. Automatic account set-up and creation is available directly from within the NetSim wizard.

Key Features

- 3-step wizard-based publishing
- Ability to interact with and run models on the web in real-time or Flight Simulator
- Input objects include knobs, sliders, switches, buttons and list input devices
- Output objects include graphs, tables, numeric displays, and status indicators
- Storytelling with graphics, movies and text annotations
- Multimedia coaching triggers through "message posting"
- Page navigation and sizing for proper presentation
- Free web hosting service from Forio Business Simulations with automatic account set-up and creation through the NetSim wizard
- Link to view or delete published models
- Simulation sharing via email and social networking web sites

"With Isee Netsim teachers and students can easily access and explore models about everything from environmental science to social studies to literature."

"The storytelling feature helps communicate underlying model structures and makes Isee NetSim even more powerful."

*— Anne Lavigne
Waters Foundation, Systems Thinking in Schools Project*

System Requirements

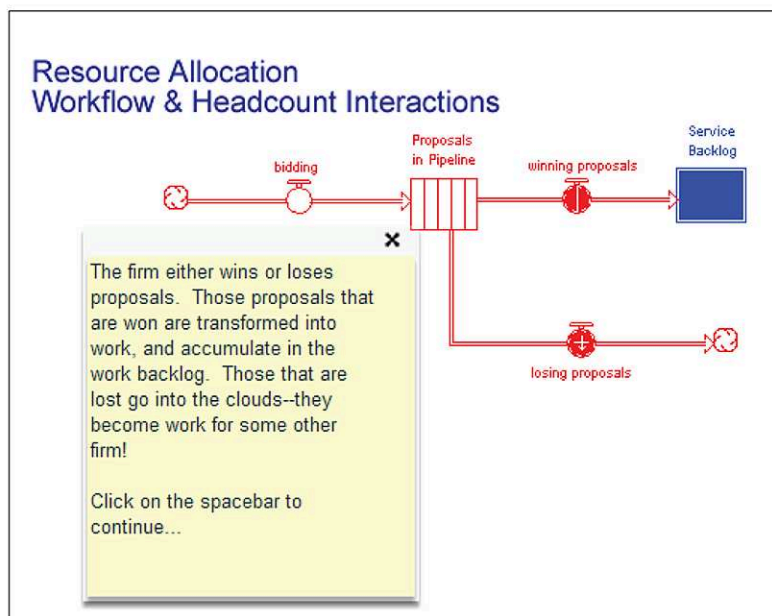
For authorizing and publishing a model:

iThink or STELLA 9.1

High speed Internet connection
Web browser with Adobe Flash Player 9

For previewing and running a published model:

High speed Internet connection
Web browser with Adobe Flash Player 9



Storytelling helps to explain a model by unfurling structure and annotations step-by-step.



Phone 603 448 4990

Fax 603 448 4992

www.iseesystems.com

isee systems (formerly High Performance Systems) is the world leader in Systems Thinking software. Founded in 1985, Isee developed STELLA, the first software to bring Systems Thinking to the desktop. In addition to STELLA, which is used primarily by educators and researchers, Isee offers *iThink* for business simulation. Isee is a privately-held company with substantial global reach in business, education, and government markets.

the world leader in Systems Thinking software™