

Version 10 Feedback Forum

Karim Chichakly
October 6, 2010



Version 10 Overview

- Enhanced Web 2.0-style user interface
 - Arrays
 - Find
 - Graphical Functions
- Modeling Enhancements
 - Data management
 - Improved modeling engine
 - XMILE format files

User Interface Improvements

- Define variables using direct-access palette
- Expanded Find
 - drag and drop
 - string search
 - filtering
 - hierarchical views
- Improved array user interface
- Graphical function presets
- Scales, ranges, and numeric formatting

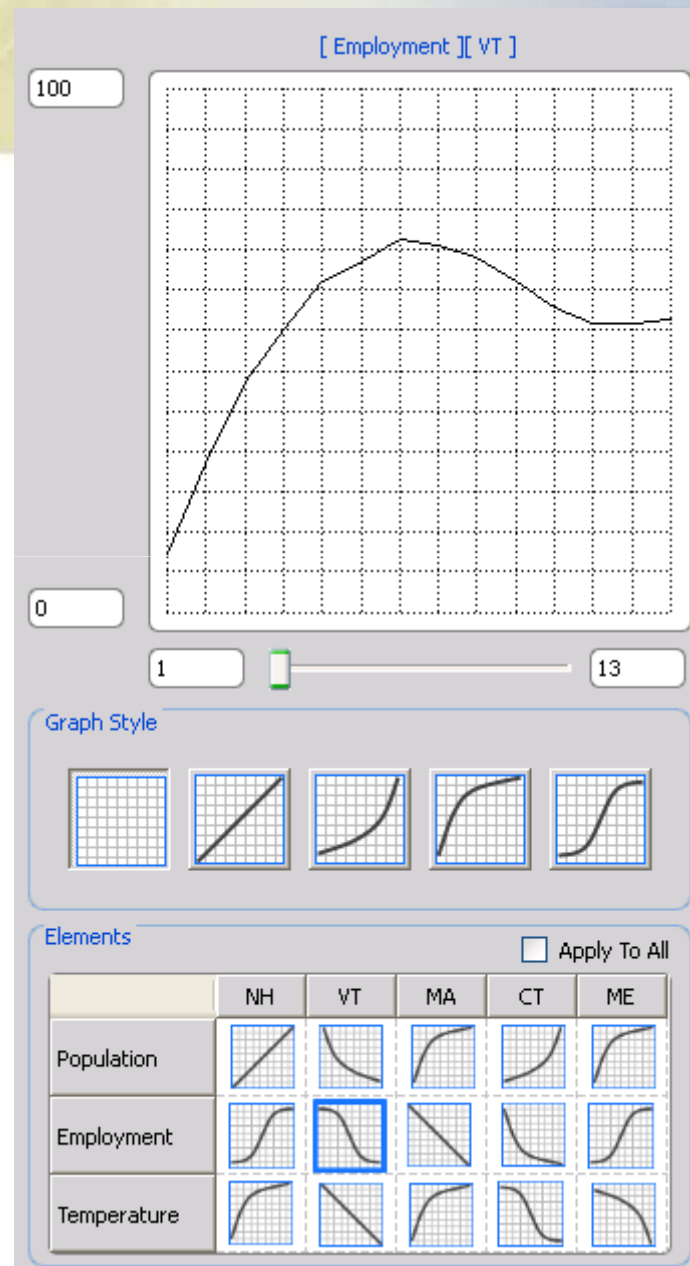
Modeling Improvements

- More powerful modeling engine (STEAM)
 - *N*-dimensional arrays
 - Billions of entities and run steps
- Sensitivity analysis of graphical functions
- Archive and recall simulation results
- Database access to simulation results
- Industry standard XMILE file format

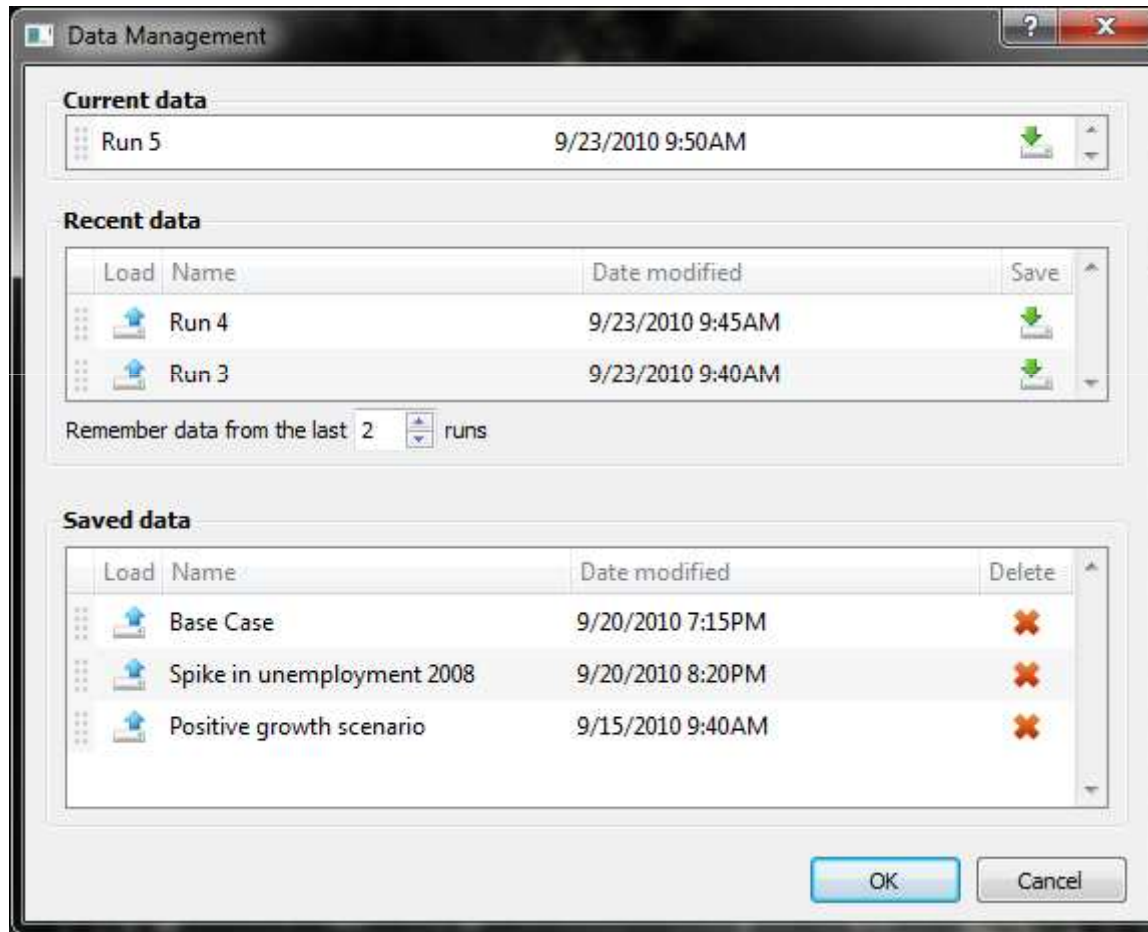
Demonstration

We will build a small model together in version 10.

Arrayed Graphical Function



Data Manager



Contact Information

feedback@iseesystems.com

isee systems, inc.

31 Old Etna Road, Suite 7N

Lebanon, NH 03766

(603) 448-4990

www.iseesystems.com

kchichakly@iseesystems.com

